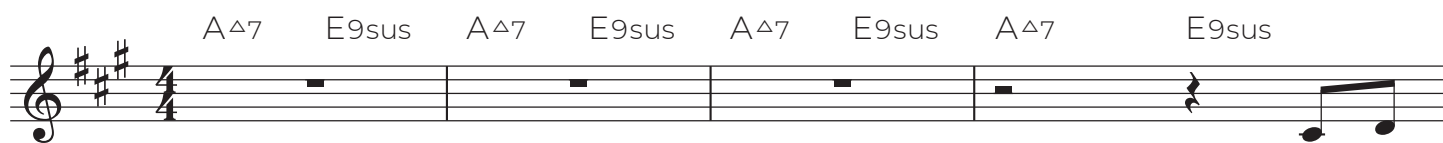


WHERE YOU'LL ALWAYS BE

Music and lyrics by Aline Shader (1994)

Flowing ♩ = 95



Where the



day be - gins, where the night - time ends, where the sky is blue, and the
star - dust falls and the moon - beam shines, where the sun is new, and the



rain - bow bends, what I'll al - ways see when I think of you, where you'll
light de - fines what I'll al - ways see when I think of you, where you'll



al - ways be. Where the And I
al - ways be.



wait for, and I wish for, and I look ev - ery - where 'til I'm



sure, ve - ry sure you are there. Where the

22 A Δ 7 E9sus A Δ 7 C \sharp m7 D Δ 7 A/C \sharp

wea - ver spins, and the dream is caught, where my high - est hope meets my

25 Bm7 E9 C \sharp m7 F \sharp 7 Bm7 E7

deep - est thought, why I al - ways knew what I'll al - ways see — when I

28 A9 **rit.** D E9 **a tempo** A Δ 7 E9sus A Δ 9 E9sus

think of you, where you'll al - ways be.

32 **rit.** A Δ 7